

ET DOUBLE-GLASS PV MODULE

ET-P660290GL 290W

ET-P660285GL 285W

ET-P660280GL 280W

ET-P660275GL 275W

ET-P660270GL 270W



1500V system voltages, save BoS cost



More reliable & durable with frameless design



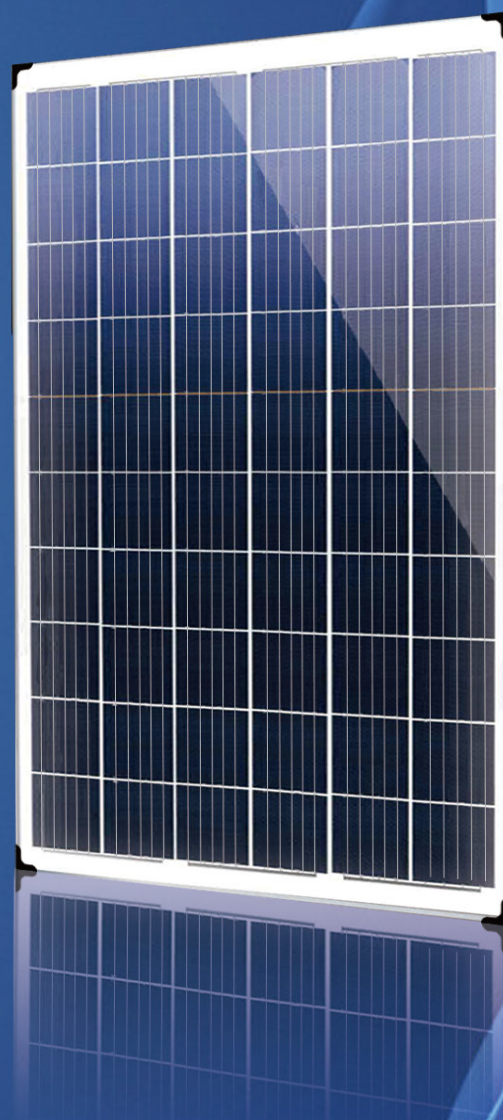
Higher fire rating enhances safety



Anti-PID technology



Available for residential, commercial & utility sites



IEC 61215 Ed.2
IEC 61730



ET SOLAR

Tel: +86 25 86898096 Fax: +86 25 86898097

Email: info@etsolar.com www.etsolar.com

ET Solar

M/ET-PD-EN-EU2019V1

ELECTRICAL SPECIFICATIONS

Model Type	ET-P660290GL	ET-P660285GL	ET-P660280GL	ET-P660275GL	ET-P660270GL
Peak Power (Pmax)	290W	285W	280W	275W	270W
Module Efficiency	17.46%	17.16%	16.86%	16.56%	16.26%
Maximum Power Voltage (Vmp)	32.65V	32.21V	31.68V	31.32V	30.97V
Maximum Power Current (Imp)	8.88A	8.85A	8.84A	8.78A	8.72A
Open Circuit Voltage (Voc)	40.41V	40.26V	39.16V	38.92V	38.72V
Short Circuit Current (Isc)	9.53A	9.52A	9.47A	9.35A	9.31A
Power Tolerance	0 to +5W				
Operating Temperature	- 40 ~ + 85°C				
Maximum System Voltage	DC 1500V				
Nominal Operating Cell Temperature	45±2°C				
Maximum Series Fuse Rating	20A				

MECHANICAL SPECIFICATIONS

Cell Type	156.75 mm×156.75mm
Number of Cells	60 cells in series
Weight	23.6 kg (52.03 lbs)
Dimension	1666×997×6 mm (65.59×39.25×0.24 inch)
Junction Box	IP67 rated
Connector	MC4 Compatible
Output cable	4mm ² , 250mm

TEMPERATURE COEFFICIENT

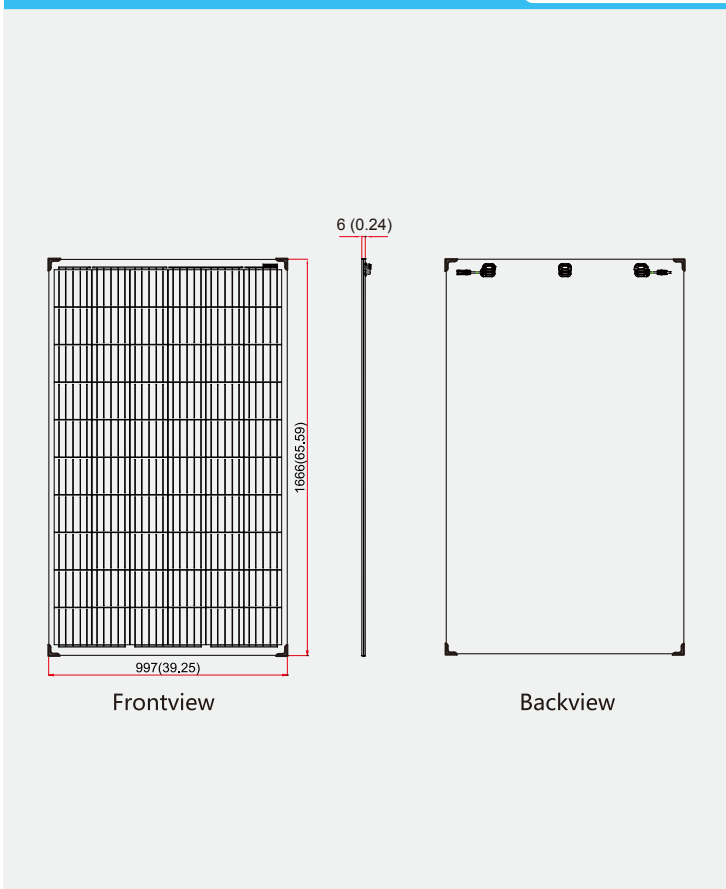
Temp. Coeff. of Isc (TK Isc)	0.04% /°C
Temp. Coeff. of Voc (TK Voc)	-0.34% /°C
Temp. Coeff. of Pmax (TK Pmax)	-0.41% /°C

PACKING MANNER

Container	40' HQ
Pieces per Pallet	33
Pieces per Container	858

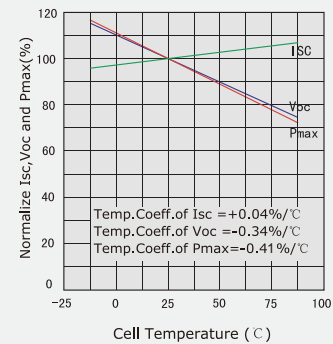
PHYSICAL CHARACTERISTICS

Unit:mm (inch)

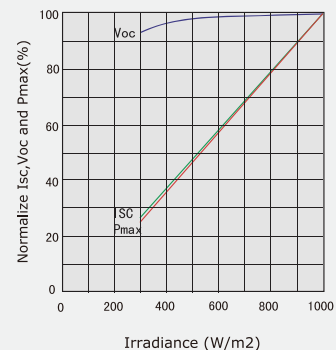


ELECTRICAL CHARACTERISTICS

Temperature Dependence of Isc, Voc and Pmax



Irradiance Dependence of Isc, Voc and Pmax (Cell Temperature:25°C)



Note: the specifications are obtained under the Standard Test Conditions (STCs): 1000 W/m² solar irradiance, 1.5 Air Mass, and cell temperature of 25°C. The NOCT is obtained under the Test Conditions: 800 W/m², 20°C ambient temperature, 1m/s wind speed, AM 1.5 spectrum. Please contact support@etsolar.com for technical support. The actual transactions will be subject to the contracts. This parameters is for reference only and it is not a part of the contracts. The specifications are subject to change without prior notice.