

ET DOUBLE-GLASS PV MODULE

ET-P672345GL 345W

ET-P672340GL 340W

ET-P672335GL 335W

ET-P672330GL 330W

ET-P672325GL 325W



1500V system voltages, save BoS cost



More reliable & durable with frameless design



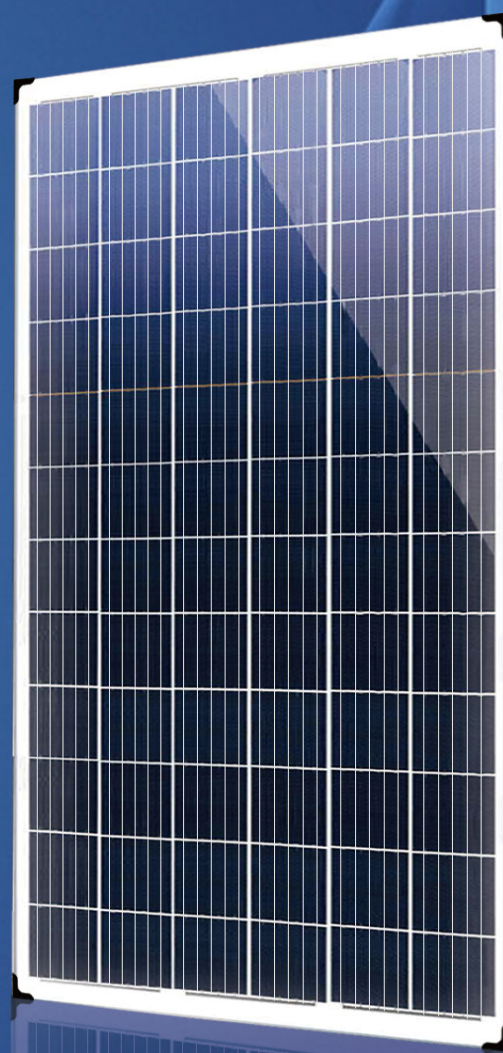
Higher fire rating enhances safety



Anti-PID technology



Available for residential, commercial & utility sites



IEC 61215 Ed.2
IEC 61730



ET SOLAR

Tel: +86 25 86898096

Fax: +86 25 86898097



M/ET-PD-CH-CN2019V1

ELECTRICAL SPECIFICATIONS

Model Type	ET-P672345GL	ET-P672340GL	ET-P672335GL	ET-P672330GL	ET-P672325GL
Peak Power (Pmax)	345W	340W	335W	330W	325W
Module Efficiency	17.46%	17.21%	16.95%	16.70%	16.45%
Maximum Power Voltage (Vmp)	38.94V	38.42V	37.90V	37.58V	37.28V
Maximum Power Current (Imp)	8.86A	8.85A	8.84A	8.78A	8.72A
Open Circuit Voltage (Voc)	48.32V	47.67V	46.83V	46.65V	46.31V
Short Circuit Current (Isc)	9.52A	9.51A	9.47A	9.35A	9.28A
Power Tolerance	0 to +5W				
Operating Temperature	- 40 ~ + 85°C				
Maximum System Voltage	DC 1500V				
Nominal Operating Cell Temperature	45±2°C				
Maximum Series Fuse Rating	20A				

MECHANICAL SPECIFICATIONS

Cell Type	156.75 mm×156.75 mm
Number of Cells	72 cells in series
Weight	28.1 kg (61.95 lbs)
Dimension	1982×997×6 mm (78.03×39.25×0.24 inch)
Junction Box	IP67 rated
Connector	MC4 Compatible
Output cable	4mm ² , 250mm

TEMPERATURE COEFFICIENT

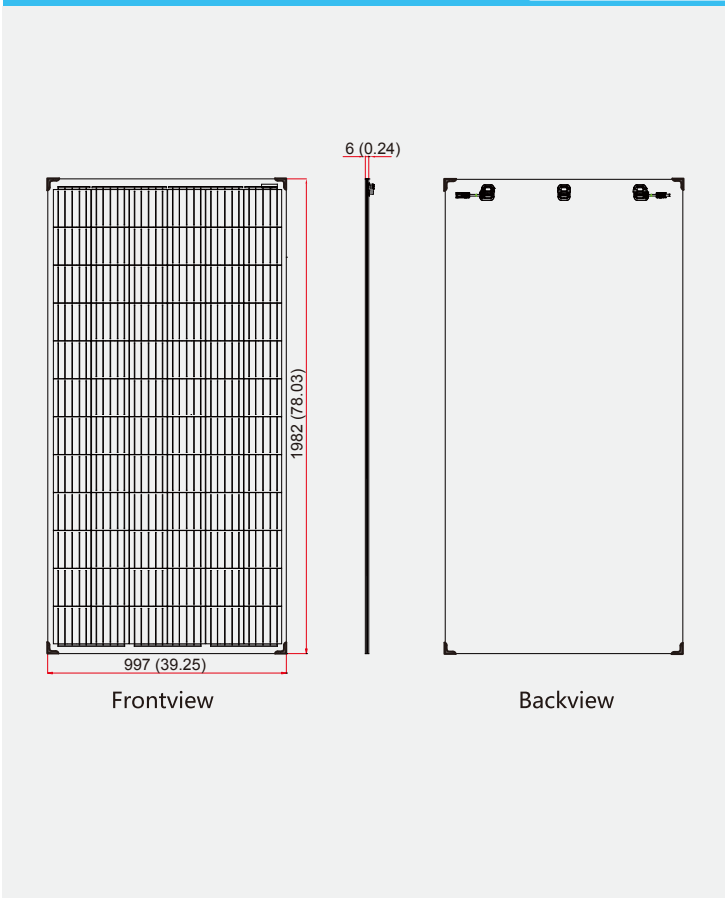
Temp. Coeff. of Isc (TK Isc)	0.04% /°C
Temp. Coeff. of Voc (TK Voc)	-0.34% /°C
Temp. Coeff. of Pmax (TK Pmax)	-0.41% /°C

PACKING MANNER

Container	40' HQ
Pieces per Pallet	30
Pieces per Container	660

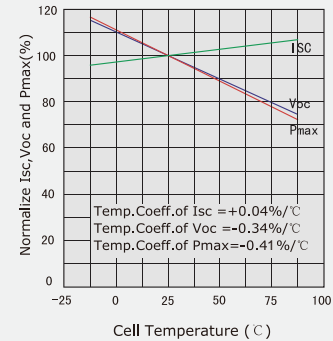
PHYSICAL CHARACTERISTICS

Unit:mm (inch)

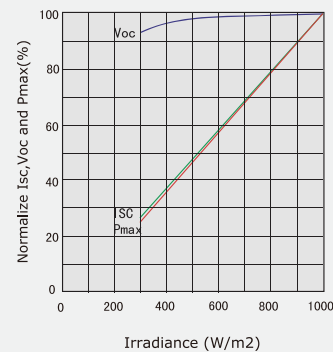


ELECTRICAL CHARACTERISTICS

Temperature Dependence of Isc, Voc and Pmax



Irradiance Dependence of Isc, Voc and Pmax (Cell Temperature:25°C)



Note: the specifications are obtained under the Standard Test Conditions (STCs): 1000 W/m² solar irradiance, 1.5 Air Mass, and cell temperature of 25°C. The NOCT is obtained under the Test Conditions: 800 W/m², 20°C ambient temperature, 1m/s wind speed, AM 1.5 spectrum. Please contact support@etsolar.com for technical support. The actual transactions will be subject to the contracts. This parameters is for reference only and it is not a part of the contracts. The specifications are subject to change without prior notice.