

We Make Solar Evolve

EiTe POLY

Polycrystalline Module

ETP270-60 270W

ETP275-60 275W

ETP280-60 280W

ETP285-60 285W

Rich Product Portfolio & Innovative Product Strategy, satisfy customer needs to the best, and keep the customers' overall costs to the lowest.



High Conversion Efficiency

Industry-leading processing techniques realize great module efficiency to a maximum of 17.5%, steady power output guaranteed.



Anti-reflective Coating and Reduce O&M Costs

Easier to clean by rainwater to remove dirt on the glass surface, making higher power output and lower maintenance costs.



0 to +5W Positive Tolerance

Gain more power yields than expected.



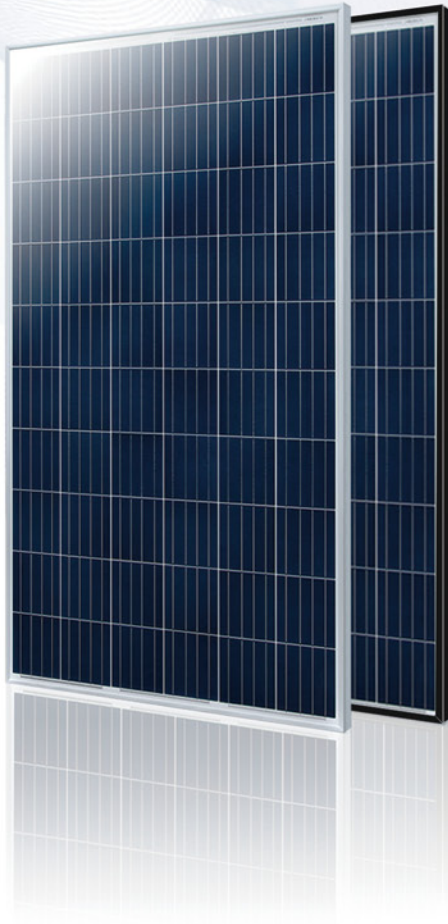
Excellent Loading Capability

2400Pa wind loads, 5400Pa snow loads.
Durable and long-lasting.

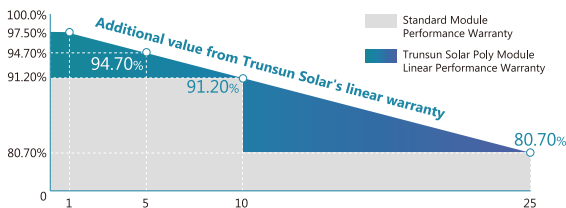


Top-quality & Trustworthy Product

Rigorous Quality Management System built.
Multiple internationally recognized PV industry standard certifications attained.



LINEAR PERFORMANCE WARRANTY



25 25-years Linear Performance Warranty

10 10-years Product Material & Workmanship



ELECTRICAL SPECIFICATIONS (STC)

Model Type	ETP270-60	ETP275-60	ETP280-60	ETP285-60
Peak Power (Pmax)	270W	275W	280W	285W
Module Efficiency	16.6%	16.9%	17.2%	17.5%
Maximum Power Voltage (Vmp)	31.58V	31.87V	32.15V	32.43V
Maximum Power Current (Imp)	8.55A	8.63A	8.71A	8.79A
Open Circuit Voltage (Voc)±3%	37.87V	38.14V	38.42V	38.69V
Short Circuit Current (Isc)±3%	9.13A	9.2A	9.27A	9.35A
Power Tolerance	0 to +5W			
Operating Temperature	- 40 ~ + 85°C			
Maximum System Voltage	DC 1000V			
Nominal Operating Cell Temperature	43±3°C			
Fire Safety	Class C			
Maximum Series Fuse Rating	15A			

ELECTRICAL SPECIFICATIONS (NOCT)

Model Type	ETP270-60	ETP275-60	ETP280-60	ETP285-60
Peak Power (Pmax)	200W	204W	207W	211W
Maximum Power Voltage (Vmp)	29.15V	29.42V	29.68V	29.93V
Maximum Power Current (Imp)	6.86A	6.93A	6.99A	7.05A
Open Circuit Voltage (Voc)	35.58V	35.83V	36.09V	36.35V
Short Circuit Current (Isc)	7.40A	7.45A	7.51A	7.57A

MECHANICAL SPECIFICATIONS

Cell Type	Poly-Crystalline ,6' inch
Number of Cells	60pcs(6×10)
Weight	18.2kg
Dimension	1640×991×35 mm
Front Cover	3.2mm Tempered Glass
Frame	Anodized Aluminium Alloy
Junction Box	IP67, 3 Bypass Diodes
Cable Type	4mm ²
Length of Cable	1000mm
Connector	PV Connector

TEMPERATURE COEFFICIENT

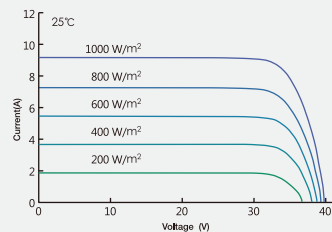
Temp. Coeff. of Isc (TK Isc)	0.05% /°C
Temp. Coeff. of Voc (TK Voc)	-0.33% /°C
Temp. Coeff. of Pmax (TK Pmax)	-0.41% /°C

PACKING MANNER

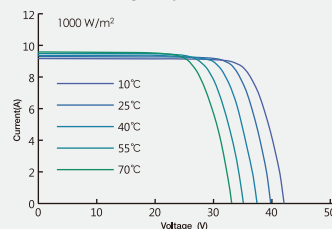
Container	40' HQ
Piece/Pallet	30
Pallet/Container	28
Piece/Container	840

ELECTRICAL CHARACTERISTICS

Current-Voltage Curve under different irradiance

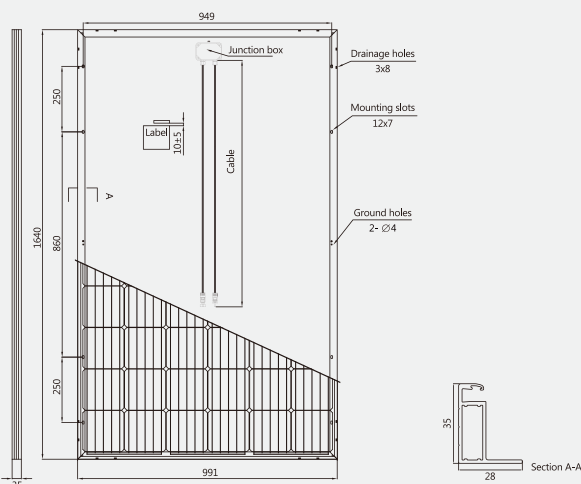


Current-Voltage Curve under different working temperatures



PHYSICAL CHARACTERISTICS

Unit:mm (inch)



Note: the specifications are obtained under the Standard Test Conditions (STCs): 1000 W/m² solar irradiance, 1.5 Air Mass, and cell temperature of 25°C. The NOCT is obtained under the Test Conditions: 800 W/m², 20°C ambient temperature, 1m/s wind speed, AM 1.5 spectrum.

Please contact support@etsolar.com for technical support. The actual transactions will be subject to the contracts. This parameters is for reference only and it is not a part of the contracts. The specifications are subject to change without prior notice.