

We Make Solar Evolve

# EiTe POLY

## Polycrystalline Module

ETP325-72 325W

ETP330-72 330W

ETP335-72 335W

ETP340-72 340W

Rich Product Portfolio & Innovative Product Strategy, satisfy customer needs to the best, and keep the customers' overall costs to the lowest.



### High Conversion Efficiency

Industry-leading processing techniques realize great module efficiency to a maximum of 17.5%, steady power output guaranteed.



### Anti-reflective Coating and Reduce O&M Costs

Easier to clean by rainwater to remove dirt on the glass surface, making higher power output and lower maintenance costs.



### 0 to +5W Positive Tolerance

Gain more power yields than expected.



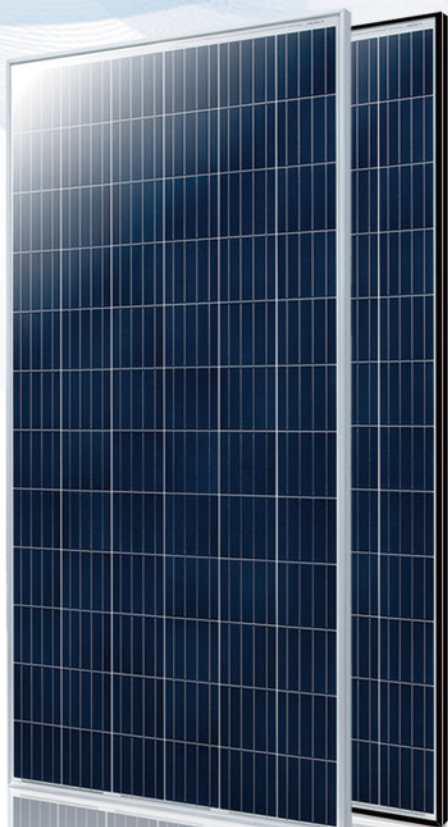
### Excellent Loading Capability

2400Pa wind loads, 5400Pa snow loads.  
Durable and long-lasting.

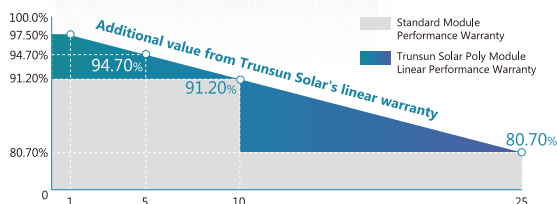


### Top-quality & Trustworthy Product

Rigorous Quality Management System built.  
Multiple internationally recognized PV industry standard certifications attained.



### LINEAR PERFORMANCE WARRANTY



25 25-years Linear Performance Warranty

10 10-years Product Material & Workmanship



## ELECTRICAL SPECIFICATIONS (STC)

Model Type	ETP325-72	ETP330-72	ETP335-72	ETP340-72
Peak Power (Pmax)	325W	330W	335W	340W
Module Efficiency	16.8%	17.0%	17.3%	17.5%
Maximum Power Voltage (Vmp)	37.75V	38.11V	38.38V	38.6V
Maximum Power Current (Imp)	8.61A	8.66A	8.73A	8.81A
Open Circuit Voltage (Voc)±3%	45.68V	45.96V	46.24V	46.51V
Short Circuit Current (Isc)±3%	9.14A	9.2A	9.46A	9.57A
Power Tolerance	0 to +5W			
Operating Temperature	- 40 ~ + 85°C			
Maximum System Voltage	DC 1000V			
Nominal Operating Cell Temperature	43±3°C			
Fire Safety	Class C			
Maximum Series Fuse Rating	15A			

## ELECTRICAL SPECIFICATIONS (NOCT)

Model Type	ETP325-72	ETP330-72	ETP335-72	ETP340-72
Peak Power (Pmax)	241W	244W	248W	252W
Maximum Power Voltage (Vmp)	34.85V	35.18V	35.43V	35.63V
Maximum Power Current (Imp)	6.91A	6.95A	7.01A	7.07A
Open Circuit Voltage (Voc)	42.91V	43.18V	43.44V	43.69V
Short Circuit Current (Isc)	7.40A	7.45A	7.66A	7.75A

## MECHANICAL SPECIFICATIONS

Cell Type	Poly-Crystalline, 6' inch
Number of Cells	72pcs(6×12)
Weight	22 kg
Dimension	1956×991×40mm
Front Cover	3.2mm Tempered Glass
Frame	Anodized Aluminium Alloy
Junction Box	IP67, 3 Bypass Diodes
Cable Type	4mm <sup>2</sup>
Length of Cable	1200mm
Connector	PV Connector

## TEMPERATURE COEFFICIENT

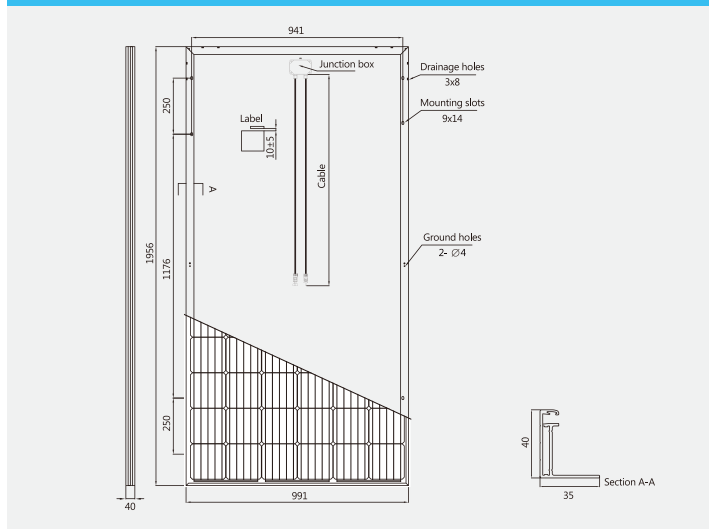
Temp. Coeff. of Isc (TK Isc)	0.05% /°C
Temp. Coeff. of Voc (TK Voc)	-0.33% /°C
Temp. Coeff. of Pmax (TK Pmax)	-0.41% /°C

## PACKING MANNER

Container	40' HQ
Piece/Pallet	30
Pallet/Container	24
Piece/Container	720

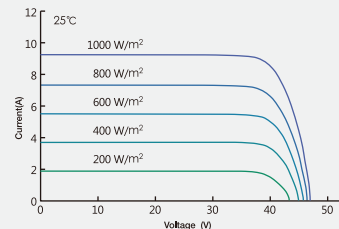
## PHYSICAL CHARACTERISTICS

Unit:mm (inch)

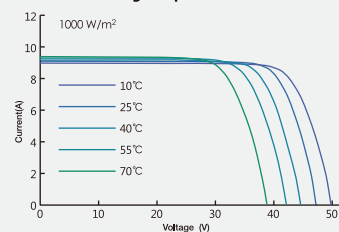


## ELECTRICAL CHARACTERISTICS

Current-Voltage Curve under different irradiance



Current-Voltage Curve under different working temperatures



**Note:** the specifications are obtained under the Standard Test Conditions (STCs): 1000 W/m<sup>2</sup> solar irradiance, 1.5 Air Mass, and cell temperature of 25°C. The NOCT is obtained under the Test Conditions: 800 W/m<sup>2</sup>, 20°C ambient temperature, 1m/s wind speed, AM 1.5 spectrum.

Please contact [support@etsolar.com](mailto:support@etsolar.com) for technical support. The actual transactions will be subject to the contracts. This parameters is for reference only and it is not a part of the contracts. The specifications are subject to change without prior notice.