

We Make Solar Evolve

# EiTe POLY

## Polycrystalline Module

ET-P672345WW/WB 345W

ET-P672340WW/WB 340W

ET-P672335WW/WB 335W

ET-P672330WW/WB 330W

ET-P672325WW/WB 325W

Rich Product Portfolio & Innovative Product Strategy, satisfy customer needs to the best, and keep the customers' overall costs to the lowest.



### High Conversion Efficiency

Industry-leading processing techniques realize great module efficiency to a maximum of 17.78%, steady power output guaranteed.



### Anti-reflective Coating and Reduce O&M Costs

Easier to clean by rainwater to remove dirt on the glass surface, making higher power output and lower maintenance costs.



0 to +5W

### 0 to +5W Positive Tolerance

Gain more power yields than expected.



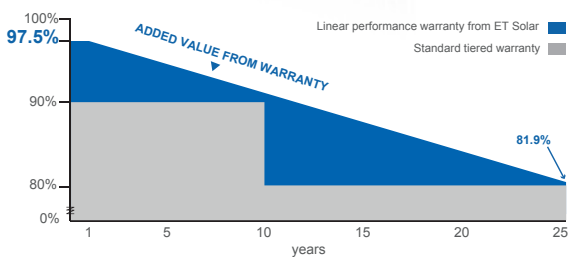
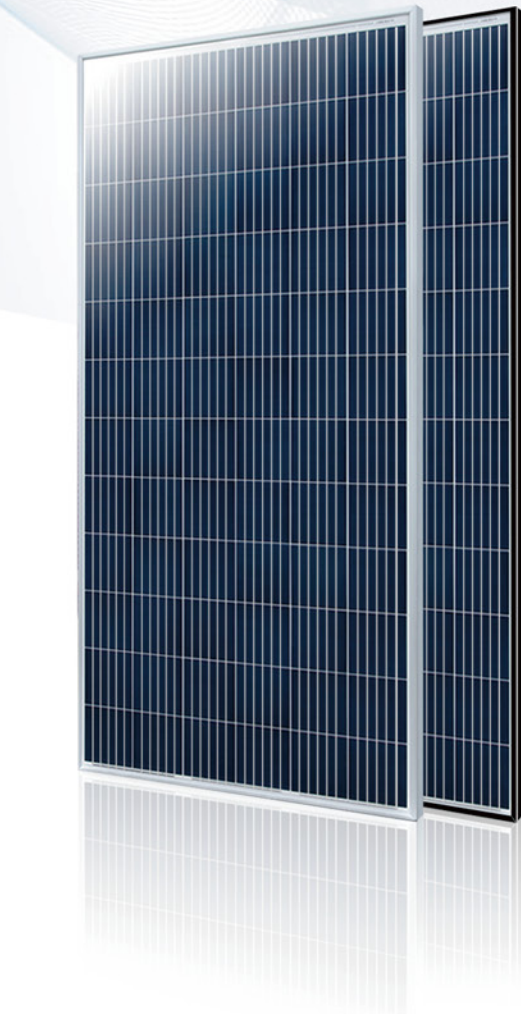
### Excellent Loading Capability

2400Pa wind loads, 5400Pa snow loads.  
Durable and long-lasting.



### Top-quality & Trustworthy Product

Rigorous Quality Management System built.  
Multiple internationally recognized PV industry standard certifications attained.



**25** 25-year performance warranty

**10** 10-year warranty on materials and workmanship

IEC 61215 Ed.2  
IEC 61730  
IEC 61701  
IEC 62716



**ET** Solar

## ELECTRICAL SPECIFICATIONS (STC)

| Model Type                         | ET-P672345WW  | ET-P672340WW | ET-P672335WW | ET-P672330WW | ET-P672325WW |
|------------------------------------|---------------|--------------|--------------|--------------|--------------|
|                                    | ET-P672345WB  | ET-P672340WB | ET-P672335WB | ET-P672330WB | ET-P672325WB |
| Peak Power (Pmax)                  | 345W          | 340W         | 335W         | 330W         | 325W         |
| Module Efficiency                  | 17.78%        | 17.52%       | 17.26%       | 17.01%       | 16.75%       |
| Maximum Power Voltage (Vmp)        | 38.94V        | 38.42V       | 37.90V       | 37.58V       | 37.28V       |
| Maximum Power Current (Imp)        | 8.86A         | 8.85A        | 8.84A        | 8.78A        | 8.72A        |
| Open Circuit Voltage (Voc)         | 48.32V        | 47.67V       | 46.83V       | 46.65V       | 46.31V       |
| Short Circuit Current (Isc)        | 9.52A         | 9.51A        | 9.47A        | 9.35A        | 9.28A        |
| Power Tolerance                    | 0 to +5W      |              |              |              |              |
| Operating Temperature              | - 40 ~ + 85°C |              |              |              |              |
| Maximum System Voltage             | DC 1000V      |              |              |              |              |
| Nominal Operating Cell Temperature | 45±2°C        |              |              |              |              |
| Fire Safety                        | Class C       |              |              |              |              |
| Maximum Series Fuse Rating         | 20A           |              |              |              |              |

## ELECTRICAL SPECIFICATIONS (NOCT)

| Model Type                  | ET-P672345WW | ET-P672340WW | ET-P672335WW | ET-P672330WW | ET-P672325WW |
|-----------------------------|--------------|--------------|--------------|--------------|--------------|
|                             | ET-P672345WB | ET-P672340WB | ET-P672335WB | ET-P672330WB | ET-P672325WB |
| Peak Power (Pmax)           | 254.5W       | 251.3W       | 247.2W       | 243.6W       | 240W         |
| Maximum Power Voltage (Vmp) | 35.3V        | 35.1V        | 34.8V        | 34.6V        | 34.4V        |
| Maximum Power Current (Imp) | 7.21A        | 7.16A        | 7.10A        | 7.03A        | 6.98A        |
| Open Circuit Voltage (Voc)  | 43.8V        | 43.5V        | 43.3V        | 43.1V        | 42.8V        |
| Short Circuit Current (Isc) | 7.76A        | 7.68A        | 7.64A        | 7.54A        | 7.48A        |

## MECHANICAL SPECIFICATIONS

|                 |   |
|-----------------|---|
| Cell Type       | 156.75 mm x 156.75 mm                   |
| Number of Cells | 72 cells in series                      |
| Weight          | 22.5 kg (49.60 lbs)                     |
| Dimension       | 1956×992×40mm (77.01×39.06×1.58 inch)   |
| Max Load        | 5400 Pascals ( 112 lb/ft <sup>2</sup> ) |
| Junction Box    | ≥IP67 rated                             |
| Connector       | MC4 Compatible                          |
| Output cable    | PV 1-F 4mm <sup>2</sup>                 |

## TEMPERATURE COEFFICIENT

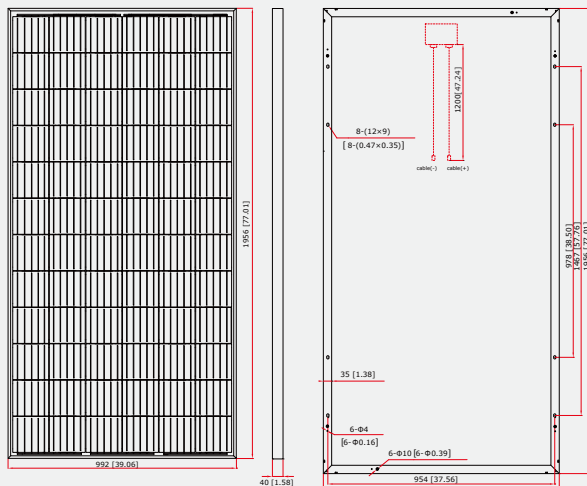
|                                |            |
|--------------------------------|------------|
| Temp. Coeff. of Isc (TK Isc)   | 0.04% /°C  |
| Temp. Coeff. of Voc (TK Voc)   | -0.34% /°C |
| Temp. Coeff. of Pmax (TK Pmax) | -0.41% /°C |

## PACKING MANNER

|                      |        |
|----------------------|--------|
| Container            | 40' HQ |
| Pieces per Pallet    | 27     |
| Pieces per Container | 708    |

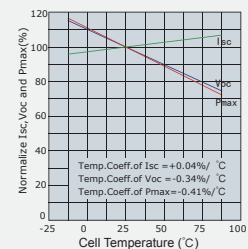
## PHYSICAL CHARACTERISTICS

Unit:mm (inch)

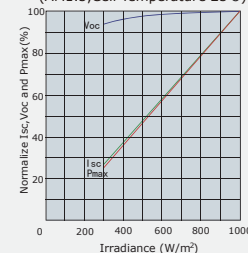


## ELECTRICAL CHARACTERISTICS

Temperature Dependence of Isc, Voc and Pmax



Irradiance Dependence of Isc, Voc and Pmax (AM1.5, Cell Temperature 25°C)



**Note:** the specifications are obtained under the Standard Test Conditions (STCs): 1000 W/m<sup>2</sup> solar irradiance, 1.5 Air Mass, and cell temperature of 25°C. The NOCT is obtained under the Test Conditions: 800 W/m<sup>2</sup>, 20°C ambient temperature, 1m/s wind speed, AM 1.5 spectrum.

Please contact [support@etsolar.com](mailto:support@etsolar.com) for technical support. The actual transactions will be subject to the contracts. This parameters is for reference only and it is not a part of the contracts. The specifications are subject to change without prior notice.